

# DESIGN SENSE

ACE  
UPDATE

DESIGN WHICH MATTERS!

COMPLEMENTARY CIRCULATION WITH ACE UPDATE

## Also read:

- »» Redefining modern living inside residence
- »» Crafting serene artistic sanctuaries in your bedroom with timeless elegance
- »» The advantages of wall and pendant lights over table lamps

# MACHAAN FINE DINING HERE DESIGN MEETS DELIGHT

Machaan Fine Dining redefines the quintessence of private dining.

[www.acedesignsense.com](http://www.acedesignsense.com)

- 04** **Urban Loop is a curved oasis in the heart of Gurgaon industrial hub**  
"Urban Loop" is a testament to how thoughtful design can break the linearity of an urban skyline, offering a dynamic and functional space that caters to the evolving needs of a rapidly growing city"
- 15** **The biophilic office design of corporatEdge**  
Studio AKAD's design for CorporatEdge not only reflects the evolution of corporate office interiors but also underscores the enduring appeal of nature's influence on human well-being and productivity.
- 19** **Experience elegance and functionality in an NGO office design**  
An office space that is just as humble and comforting as the organisation that inhabits it.
- 23** **Architectural serenity a reverent ode to Buddhism at the hotel in Bodh Gaya**  
Every space within the Hotel in Bodh Gaya embodies the core tenets of Buddhism through two architectural elements- memory and emotion.

# CONTENTS



## MACHAAN FINE DINING WHERE DESIGN MEETS DELIGHT

Machaan Fine Dining redefines the quintessence of private dining.



Cover Credit: Manta Bangal      Cover Image Courtesy: Confluence

**ASSOCIATE EDITOR:** Akanksha Vishwak  
 editor@acedesignsense.com

**EDITORIAL:** Anirudh Choudhary

**ADVERTISING:** Poojaram Poptani (+91-9322846745)  
 ads@acedesignsense.com

**SUBSCRIPTION:** Poojaram Poptani (+91-9322846745)  
 tm\_subscription@gmail.com

Printed and published by M. Prasad Kumar, Not on behalf of J Tech Media Pvt Ltd and printed at Kotha Art Printers, D1, Class Industrial Estate, Sector-29 East, Gurgaon-122009 and published at J Tech Media Pvt Ltd, 60A, Surya House, Road No. 7, Vasant Enclave, Mumbai-400077. Editor: M. Prasad Kumar.

All rights reserved. While all efforts are made to ensure that the information published is correct, ACE Update holds no responsibility for any unlikely errors that might occur. The information on products and services technology on offer is being provided for the reference of readers. However, readers are cautioned to make inquiries and take their decisions on purchase or investment after consulting experts on the subject. ACE Update holds no responsibility for any decision taken by readers on the basis of information provided herein. Tel: +91-22-25519851, +91-9821467357

### PROJECT PROFILE

## Urban Loop is a curved oasis in the heart of Gurgaon industrial hub

*Urban Loop is a testament to how thoughtful design can break the linearity of an urban skyline, offering a dynamic and functional space that caters to the evolving needs of a rapidly growing city.*

**I**n the midst of Gurgaon's bustling Udyog Vihar industrial estate, a remarkable architectural gem known as the "Urban Loop" designed by AKDA has emerged, offering a visually striking contrast to

the box-like compositions that dominate the skyline. This innovative structure, with its doubly curved milky white aluminum cladding, is a testament to modern architecture's ability to provide both form and

function within a rapidly evolving urban landscape. Udyog Vihar was initially conceived as an industrial estate in 1970, with the aim of attracting manufacturers to set up their operations in the area. However, the turn



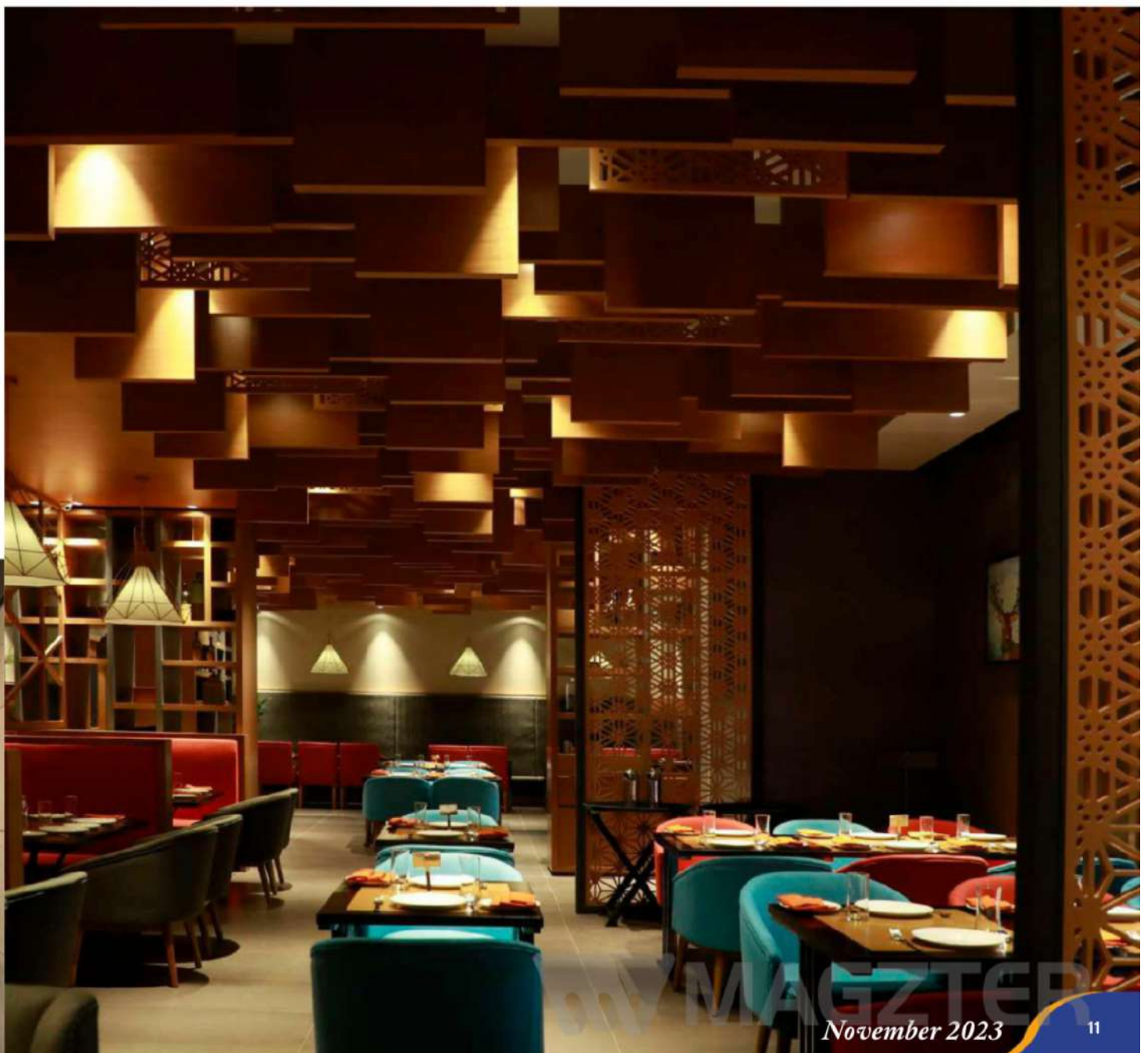
# Machaan Fine Dining where design meets delight

*Machaan Fine Dining redefines the quintessence of private dining.*

**N**estled within the bustling confines of the Nucleus Mall in Ranchi, Machaan Fine Dining is a testament to the union of culinary excellence

and extraordinary design designed by Confluence. The largest mall in Ranchi, Nucleus Mall, has become a hub of activity and leisure, attracting locals and visitors

alike. At the heart of this vibrant mall, Machaan emerges as a beacon of artistry, redefining the dining experience through its captivating design.



November 2023

11



Machaan is a dining establishment that elevates the restaurant design concept. It marries the elements of light, shadow, and form in a choreographed dance that creates a symphony of visual delight. The restaurant's design transcends the conventional, making it a standout in the culinary landscape of Ranchi. It's not merely a restaurant but a space where design and culinary excellence converge to create an unforgettable experience.



One of the first aspects that catch the eye upon entering Machaan is the clever use of space. The long and narrow layout of the restaurant is transformed into a visual masterpiece. The design incorporates various dining areas, including private seating spaces, with a meticulous blend of wood and grey aesthetics. This choice of



colour and material creates a sophisticated and inviting atmosphere, setting the stage for an unforgettable dining experience.

The essence of Machaan lies in the nuanced interplay of textures and hues. Rather than traditional panelling or partitioning, the restaurant uses screens and racks strategically placed throughout the space. These screens and racks not only create distinct zones but also serve as elements of personalisation. What sets them apart is their malleable nature, allowing for ever-evolving decoration. This





## The biophilic office design of CorporatEdge

*Studio IAAD's design for CorporatEdge not only reflects the evolution of corporate office interiors but also underscores the enduring appeal of nature's influence on human well-being and productivity.*

Corporate office interiors are evolving rapidly, mirroring the changing landscape of job roles and work dynamics. Gone are the days of sombre colour schemes and rigid seating arrangements as the corporate world embraces

design. Co-working spaces, in particular, present an opportunity to redefine modern corporate interiors. They cater to diverse audiences and businesses, demanding a universal appeal in functionality and aesthetics.

Studio IAAD, known for its

innovative design solutions, took on the challenge of transforming the workspace for CorporatEdge in bustling Bangalore. Located in the ITC building, CorporatEdge is a renowned service suite centre in South India, standing out amidst the tech-driven cityscape of Bangalore. Covering an

dynamic feature ensures that the ambience can be refreshed without needing a complete overhaul, keeping the restaurant's interior fresh and engaging.

The restaurant's ceiling is a masterpiece of craftsmanship, featuring multilevel panels adorned with delicate screens. These screens serve a dual purpose they add depth and intricacy to the space while also functioning as privacy panels. Beyond the screens, the walls come to life with vibrant red and blue furnishings. The restaurant's decor is meticulously curated, ensuring that monotony remains at bay and that each element contributes to the space's vibrant character.

